



Sepulveda Screening Room

Office (310)659-3875

Cell (310)701-8925

www.StudioScreenings.com

Sepulveda Screening Room parking:

Parking is located at 1640 South Sepulveda Blvd
One half block north of Santa Monica Blvd
on the East side of Sepulveda Blvd

Parking is located at the South end of the building,
just to the right of the loading dock. The entrance is
located on the alley directly behind the Mobil.
Enter by taking the ramp to the underground garage.

For all screenings:

Take a ticket from the parking machine.

Garage door and gate will open.

Park in any of the unrestricted parking spots.
DO NOT PARK IN RESERVED SPACES.

Note: Not all screenings are validated.
Please check with the person that invited
you to see if the parking will be validated.

If parking is validated:

Ask the representative of the
screening for a validation ticket.

If validation is not being provided:

You may pay the projectionist \$8.75 cash.
Tickets without validation are \$2.25 per 15min,
\$25 daily maximum.

(Note: There is no charge for cars entering the garage
after 5pm Mon-Fri and all day on Sat & Sun.
A free validation ticket is still required to exit.)

Limited street parking is available.

Street meters are free on Sunday.

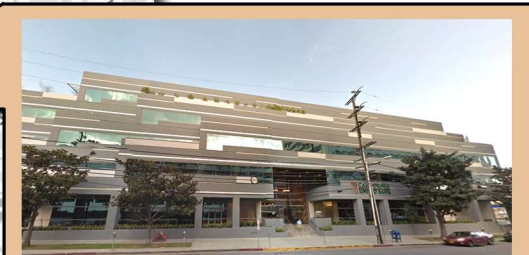
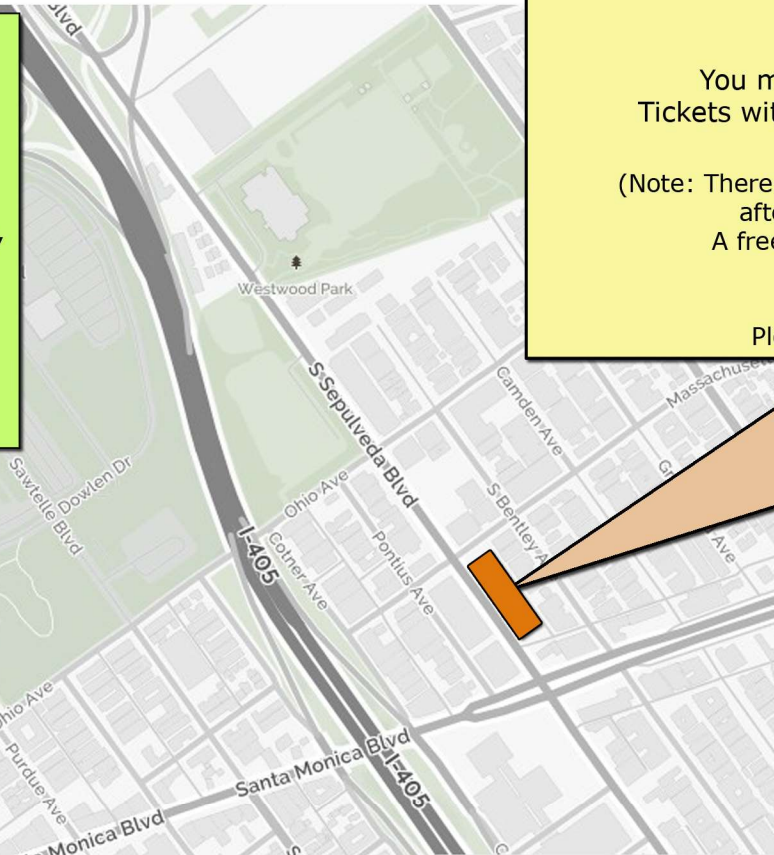
Please read signs to determine restrictions.

Notes:

The front door to the building is locked
after hours. Guests need to check go to
the main building lobby to check in.

The garage door will be closed after hours.
Please drive up, push the button, take a ticket,
enter, and get validation at the screening.

To get to the screening room go to the Lobby
level. Go to the painting, turn left, at the end
of the corridor, turn right, at the end of the
corridor, turn right.



Sepulveda Screening Room

1640 South Sepulveda Blvd

Suite 104

Los Angeles, CA 90025

(65-71 seats)